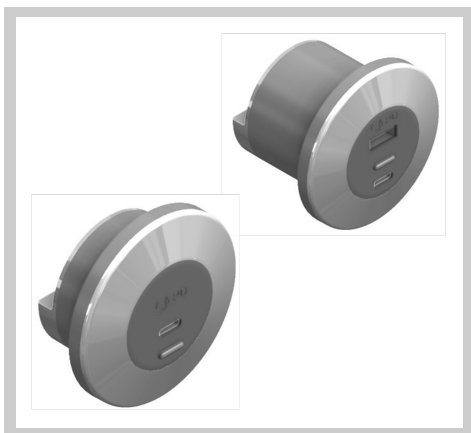


OPERATING & ASSEMBLY INSTRUCTIONS

Automotive USB Power Delivery



TEL: +44 (0) 1202 715 517 • sales@alfatronix.com

SAFETY

■ SAFETY

- The device must not be exposed to severe mechanical shocks
- The device must not be exposed to extreme temperature, direct sunlight or vigorous vibration
- The device may only be used within a dry environment.
- Do not spray liquid in front of the USB connector
- The wiring harness should be protected by fuses
- Observe the magnitude and polarity of the input voltage when installing
- Isolate the circuit before you connect or remove the device
- Never open the device casing and never repair it. The device must be replaced if it is damaged

■ FUSING

Each PDA Unit

must be fused individually:

C / AC: 12/24V input voltage = 7.5A fuse

CC: 12/24V input voltage = 10A fuse

CONTENTS

■ PACKING CONTENTS

i/iii. PDA -C/-CC/-AC/ Round Bezel;

- 1 x USB Charger, 2 x Crimp Connectors, 1 x Round Bezel Ring, 1 x Round Bezel 4 x Screws

ii/iv. PDA -C/-CC/-AC/ Square Bezel;

- 1 x USB Charger, 2 x Crimp Connectors, 1 x Square Bezel Ring, 1 x Square Bezel 4 x Screws

ASSEMBLY

■ ASSEMBLY PDA

1. Isolate the circuit before you connect or disconnect the device
2. Choose a suitable mounting surface ensuring nothing behind can be damaged, then drill a Ø44mm hole
3. Choose installation method, either; Round Bezel (i/iii) or Square Bezel (ii/iv)
4. Connect input positive to the terminal indicated +, connect the input negative to the terminal indicated —

i/iii. PDA -C/-CC/-AC/ Round Bezel;

1. Place bezel over the USB Charger ensuring the slot is at the bottom
2. Install through Ø44mm hole. Mark screw hole positions and screw into position
3. Press 'Round Bezel Ring' over front of the USB Charger

ii/iv. PDA -C/-CC/-AC/ Square Bezel;

1. Place bezel over the USB Charger and rotate until it clicks in
2. Install through Ø44mm hole. Mark screw hole positions screw into position
3. Press 'Square Bezel Ring' over front of the USB Charger

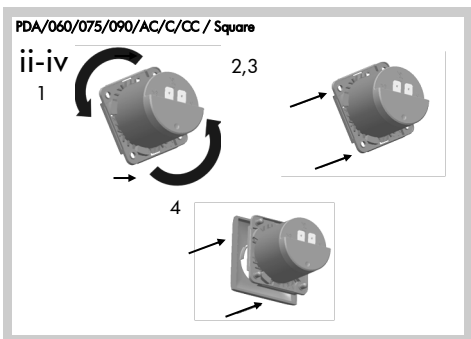
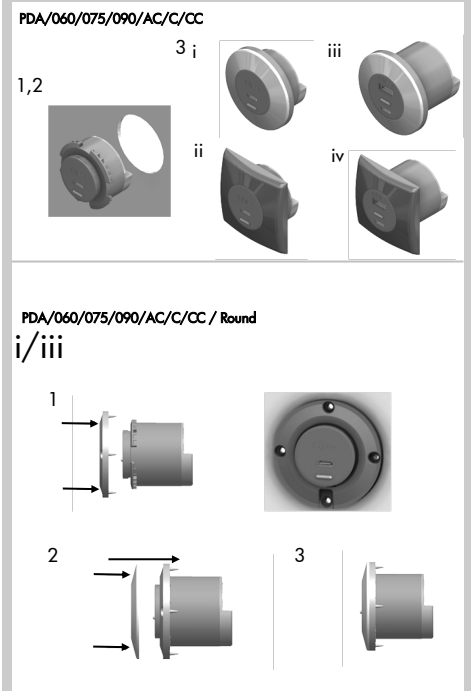
INFORMATION

■ FEATURES

- 12/24V systems compatible (9-32Vdc)
- Supplied with FASTON crimp connectors

■ TECHNICAL DATA

Part Number	Outputs	Input Voltage	Power Output	Dimensions	IP Rating
PDA060C-D1BGRS	1	9-32Vdc	60W	Ø60x32mm	IP65
PDA060C-D1BGSS	1	9-32Vdc	60W	60x60x32mm	IP65
PDA060AC-D1BGRS	2	9-32Vdc	60W	Ø60x32mm	IP65
PDA060AC-D1BGSS	2	9-32Vdc	60W	60x60x32mm	IP65
PDA075AC-D1BGRS	2	17-32Vdc	75W	Ø60x50mm	IP65
PDA075AC-D1BGSS	2	17-32Vdc	75W	60x60x50mm	IP65
PDA090CC-D1BGRS	2	9-32Vdc	90W	Ø60x50mm	IP65
PDA090CC-D1BGSS	2	9-32Vdc	90W	60x60x50mm	IP65



The type marking is located at the back of the device.

