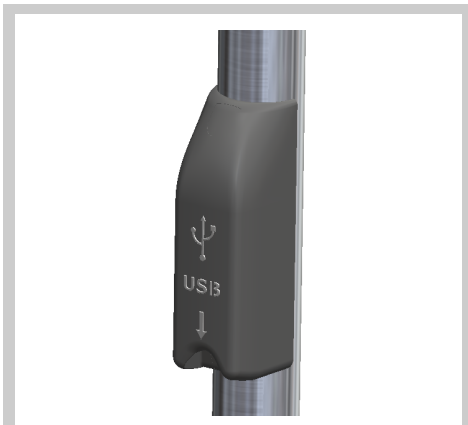


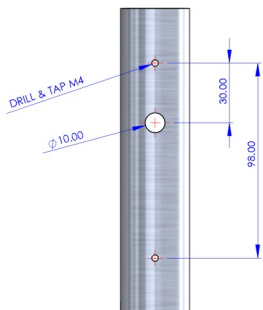
OPERATING & ASSEMBLY INSTRUCTIONS

Pole Mounted USB Power Supply

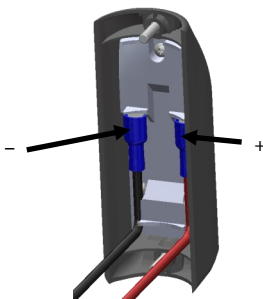


TEL: +44 (0) 1202 715 517 • sales@alfatronix.com

1,2



3



4



5



SAFETY

SAFETY

- The device must not be exposed to severe mechanical shocks.
- The device must not be exposed to extreme temperature, direct sunlight or vigorous vibration.
- The device may only be used within a dry environment, such as a vehicle.
- Do not install this device in the proximity of hot vehicle parts.
- The wiring harness should be protected by fuses.
- Observe the magnitude and polarity of the input voltage when installing, incorrect polarity of the input could damage the circuit.
- Isolate the circuit before you connect or remove the device.
- Never open the device casing and never repair it. The device must be replaced if it is damaged.

FUSING

Each PVPm-S must be fused individually:
12/24V input voltage = 2A fuse

CONTENTS

PACKING CONTENTS

PVPm-S

- 1 x PVPm-S, 2 x Crimp Connectors, 2x M4x16 Torx Screws, 2x Screw Covers

ASSEMBLY

ASSEMBLY

1. Isolate the circuit before you connect or disconnect the device.
2. Choose a suitable mounting pole ensuring nothing behind can be damaged, then drill and tap holes according to image 2—ensure sharp edges are removed to avoid damaging wires.
3. Feed supply cables down pole and connect input positive to the terminal indicated +, connect the input negative to the terminal indicated -.
4. Push the PVPm-S against the pole and secure using the screws provided. **The recommended tightening torque is 1 to 1.2Nm.**
5. Insert the screw covers.

INFORMATION

FEATURES

- 12V & 24V systems compatible (9-32Vdc)
- 5Vdc output voltage for standard charging
- Up to 9Vdc output voltage for Qualcomm compatible phones
- Apple and Android auto-detect
- Supplied with FASTON crimp connectors

TECHNICAL DATA

Part Number	Outputs	Power	Input Voltage	Output Voltage	Dimensions	Weight	IP Rating
PVPm-S	1	2.1A	9-32Vdc	5Vdc	39 x 35 x 114	57g	IP30



This device complies with the EU directive 2014/30/EU.
The type plate is located on the top of the device.